



Selbourne Street | | South Shields | NE33 2TB

£625 Per month



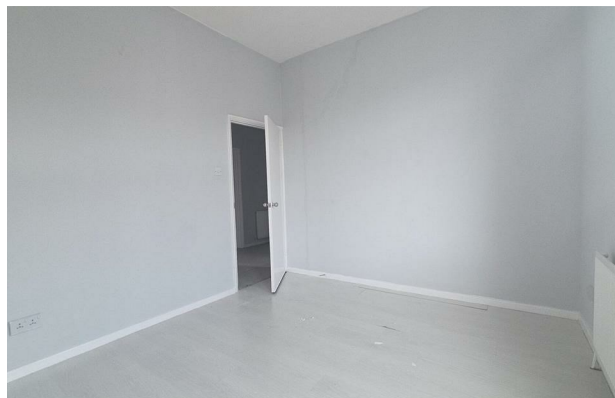
Selbourne Street |  
 South Shields | NE33 2TB  
 £625 Per month

Three Bedrooms  
 bright, airy space  
 Excellent transport links  
 Zero deposit option available

Positioned on Selborne Street, this well-proportioned 3 bedroom flat offers an abundance of natural light and a bright, open feel throughout.

The living area is comfortably sized, offering flexibility for both relaxation and working from home.

Ideally located in South Shields, the property sits within easy reach of local amenities, shops, and transport links, making it well-suited to professionals seeking a well-connected base.



Energy Efficiency Rating		Current	Potential
<i>Very energy efficient - lower running costs</i>			
(92 plus)	A		
(81-91)	B		
(69-80)	C		
(55-68)	D	60	
(39-54)	E		
(21-38)	F		
(1-20)	G		
<i>Not energy efficient - higher running costs</i>			
<b>England &amp; Wales</b>		EU Directive 2002/91/EC	

Council Tax Band A  
 EPC Rating D

St Bede Chambers Albert Road  
 Jarrow  
 NE32 5RR  
 0191 694 1104  
 general@everstone-property.com